

Spirotrap® Dirt 14", 16", 18", 20" High Velocity Dirt Separator

Job Name:
Engineer:
Contractor:
Representative:

Tag	Model	Flow	Size	Location

Technical drawing showing the elevation view of the dirt separator. Dimensions labeled include: D (diameter), H (total height), h (height to the top of the internal structure), and e (height of the bottom outlet).

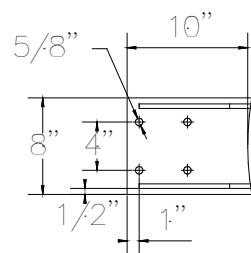
Specifications:

Shell	Steel
Coalescing Medium	Copper
Ball Valve	Brass
Max. Working Pressure	150 psig
Max. Operating Temperature	270°F

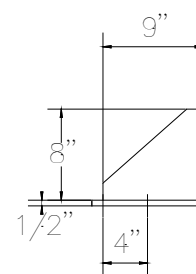
Notes: Fabricated and stamped in accordance with ASME, Section VIII, Division 1 for unfired pressure vessels.

Technical drawing showing the plan view of the dirt separator. Dimensions labeled include: PS (inlet pipe size) and LF (length of the separator).

PS - Pipe Size	14"	16"	18"	20"
D	28"	32"	36"	40"
H	82"	93"	105"	116"
h	65"	73"	83"	91"
LF	45"	50"	56"	61.4"
hs	20"	22"	22"	26"
e	2"	2"	2"	2"
Weight (lbs)	1280	1740	2290	3500
Max. GPM	4300	5500	6950	8650
Model				
THT----FA	1400	1600	1800	2000



Bracket Detail



Bracket Detail

Inlet strainer required for open condenser systems and recommended for all systems.