

Spirovent® Dirt 20", 24", 30" High Velocity Air Eliminator and Dirt Separator

Job Name:
Engineer:
Contractor:
Representative:

Tag	Model	Flow	Size	Location

Diagram showing the elevation view of the air eliminator. Dimensions include: D (top diameter), H2 (total height), h2 (height to the top of the float chamber), hs (height of the float chamber), and e-H (bottom diameter).

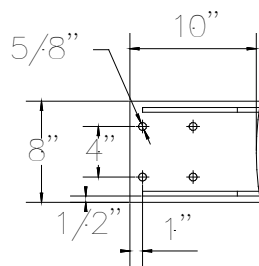
Specifications:

Shell	Steel
Vent Head	Brass
Float	Non-Ferrous
Seal	Viton
O Ring	Viton
Skim Valve	Brass
Coalescing Medium	Copper
Ball Valve	Brass
Max. Working Pressure	150 psig
Max. Operating Temperature	270°F

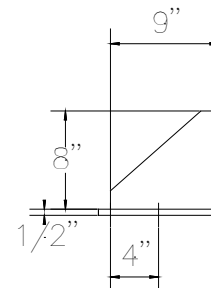
Fabricated and stamped in accordance with ASME, Section VIII, Division 1.

Diagram showing the plan view of the air eliminator. Dimensions include: PS (width of the float chamber) and LF (length of the float chamber).

Pipe Size	20"	24"	30"
D	48"	60"	72"
H2	142"	156"	204"
h2	65"	72"	96"
LF	72"	84"	108"
hs	26"	26"	30"
e	2"	2"	2"
Weight	4400	5900	12,000
Max. GPM	8650	12,500	20,200
Model			
VHT----FA	2000	2400	3000



Bracket Detail



Bracket Detail